

# LED panel light

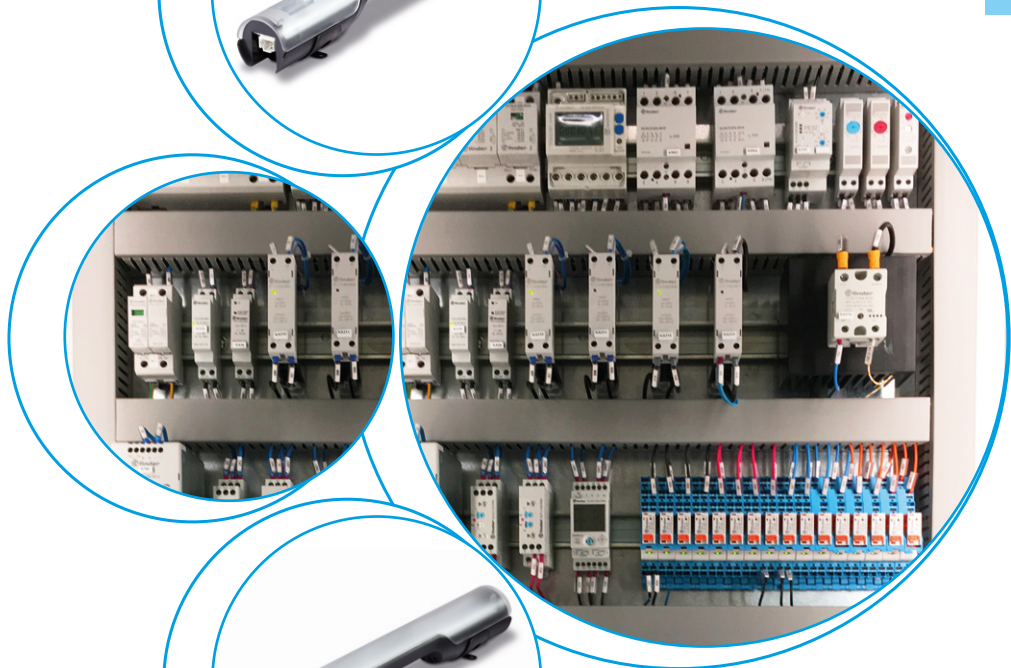
7L  
SERIES



Panels for  
electrical  
distribution



Control panels





**LED light for electrical panels**

**Type 7L.43.0.xxx.1x00**

- 600 lumens
- Direct magnetic mounting or through a screw-fixed metallic support

**Type 7L.46.0.xxx.1x00**

- 1200 lumens
- Direct magnetic mounting or through a screw-fixed metallic support

- Low power consumption
- Radiation angle 120°
- Light colour 5000 K
- Push-in terminals for the connection to a single unit
- Plug-in terminals for the connection to a single or multiple units (up to 7 lamps)
- Design by Minelli - Fossati

**NEW 7L.43.0.xxx.1x00**



- 600 lumens, 9W
- With ON/OFF switch

**NEW 7L.46.0.xxx.1x00**



- 1200 lumens, 13W
- With ON/OFF switch

For outline drawing see page 7

**Lamp Data**

Type of lamp LED, viewing angle 120°, Light colour: daylight white, colour temperature: 5000 K

Luminous flux	lm	600	1200
---------------	----	-----	------

Life time	h	60000	
-----------	---	-------	--

**Electrical Data**

Operating voltage	V AC (50/60 Hz)/DC	12...48 - 110...240	
-------------------	--------------------	---------------------	--

Operating range	V AC/DC	9.6...52.8 - 88...264	
-----------------	---------	-----------------------	--

Nominal current @230 V AC	mA	39	54
---------------------------	----	----	----

Nominal current @24 V DC	mA	200	300
--------------------------	----	-----	-----

Rated power of the lamp @230 V AC	W	9	13
-----------------------------------	---	---	----

Rated power of the lamp @24 V DC	W	9	13
----------------------------------	---	---	----

**General data**

Connection cable to the lamp	Sheathed cable 2 x 1.5 mm <sup>2</sup> , flexible with push-in or socket
------------------------------	--

Interconnectors from lamp to lamp	Sheathed cable 2 x 1.5 mm <sup>2</sup> , flexible with plug and socket
-----------------------------------	--

Socket and plug	2-pole with interlock
-----------------	-----------------------

Type of mounting	Magnetic or clip fixing
------------------	-------------------------

Housing	Plastic, transparent
---------	----------------------

Ambient temperature	°C	-30...+50
---------------------	----	-----------

Protection class	II
------------------	----

Protection category	IP 20
---------------------	-------

<b>Approvals</b> (according to type)	<b>CE</b>
--------------------------------------	-----------

## LED light for electrical panels

## Type 7L.43.0.xxx.2x00

- 600 lumens
- Direct magnetic mounting or through a screw-fixed metallic support

## Type 7L.46.0.xxx.2x00

- 1200 lumens
- Direct magnetic mounting or through a screw-fixed metallic support

- Low power consumption
- Radiation angle 120°
- Light colour 5000 K
- Push-in terminals for the connection to a single unit
- Plug-in terminals for the connection to a single or multiple units (up to 7 lamps)
- Design by Minelli - Fossati

NEW 7L.43.0.xxx.2x00



- 600 lumens
- With movement detector

NEW 7L.46.0.xxx.2x00



- 1200 lumens
- With movement detector

For outline drawing see page 8

## Lamp Data

Type of lamp

LED, viewing angle 120°, Light colour: daylight white, colour temperature: 5000 K

Luminous flux

lm

600

1200

Life time

h

60000

Light ON time after last detection

min

3

## Electrical Data

Operating voltage

V AC (50/60 Hz)/DC

12...48 - 110...240

Operating range

V AC/DC

9.6...52.8 - 88...264

Nominal current @230 V AC

mA

39

54

Nominal current @24 V DC

mA

200

300

Rated power of the lamp @230 V AC

W

9

13

Rated power of the lamp @24 V DC

W

9

13

## General data

Connection cable to the lamp

Sheathed cable 2 x 1.5 mm<sup>2</sup>, flexible with push-in or socket

Interconnectors from lamp to lamp

Sheathed cable 2 x 1.5 mm<sup>2</sup>, flexible with plug and socket

Socket and plug

2-pole with interlock

Type of mounting

Magnetic or clip fixing

Housing

Plastic, transparent

Ambient temperature

°C

-30...+50

Protection class

II

Protection category

IP 20

Approvals (according to type)



## Ordering information

Example: Series 7L, LED light with magnetic fixing, ON/OFF switch, supply voltage 12...48V AC/DC and push-in terminals.

**7 L . 4 3 . 0 . 0 2 4 . 1 1 0 0**

**Series**

**Type**

43 = LED lamp 600 lumens  
46 = LED lamp 1200 lumens

**Supply version**

0 = AC (50/60 Hz)/DC

**Supply voltage**

024 = (12...48)V AC/DC  
230 = (110...240)V AC/DC

**Connections**

1 = Push-in terminals for the connection to a single unit  
2 = Plug-in terminals for the connection to a single or multiple units

**Switching**

1 = Switching via ON/OFF switch  
2 = Switching via movement detector

**All types**

7L.43.0.024.1100	7L.46.0.024.1100
7L.43.0.024.1200	7L.46.0.024.1200
7L.43.0.024.2100	7L.46.0.024.2100
7L.43.0.024.2200	7L.46.0.024.2200
7L.43.0.230.1100	7L.46.0.230.1100
7L.43.0.230.1200	7L.46.0.230.1200
7L.43.0.230.2100	7L.46.0.230.2100
7L.43.0.230.2200	7L.46.0.230.2200

## Accessories



07L.11 (included in the box)



07L.12 (not included)

0 7 L . 1 1

Type

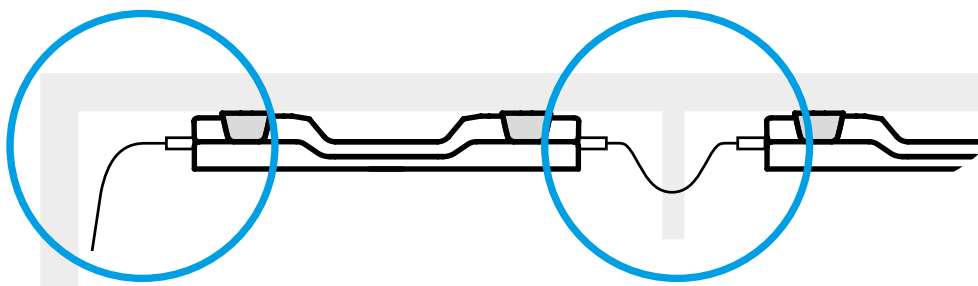
Sockets and plugs, coded, for connection to  
a 2-pole cable (2 x 1.5 mm<sup>2</sup>), e.g. H05VV-F, 2 x 1.5 mm<sup>2</sup>

11 = Socket, loose for input side

12 = Plug, loose for output side

## Connections

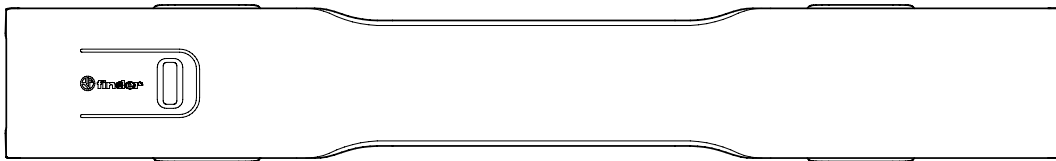
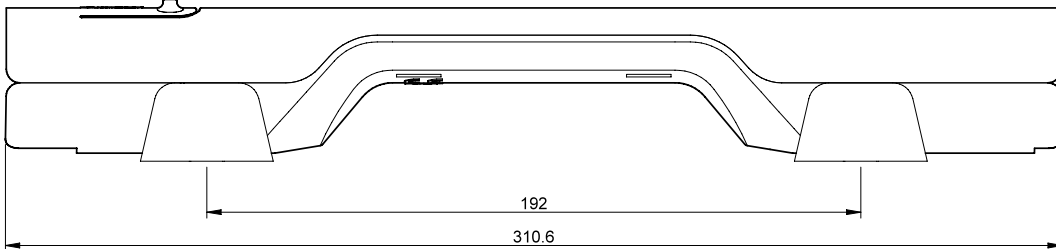
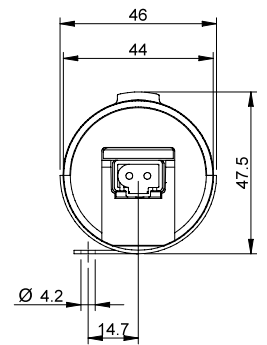
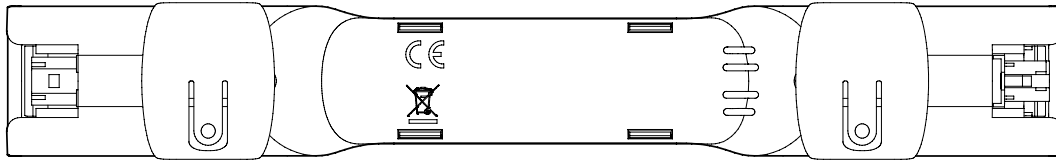
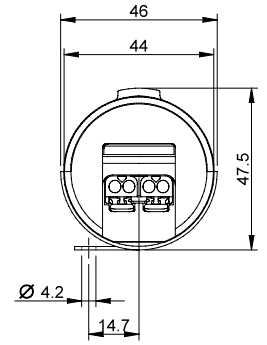
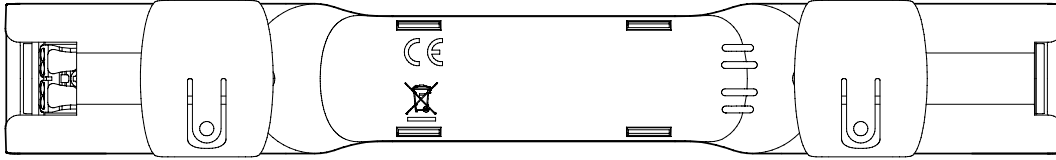
Quick and simple wiring system via  
**push-in terminals** for the connection  
to a single unit, or via **plug-in  
terminals** for the connection to a  
single or multiple units.



Multiple connection (up to 7 lamps)

### Outline drawings

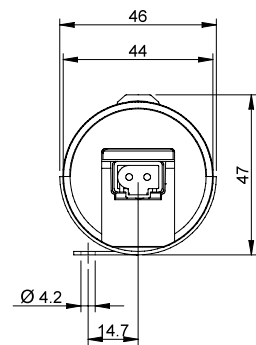
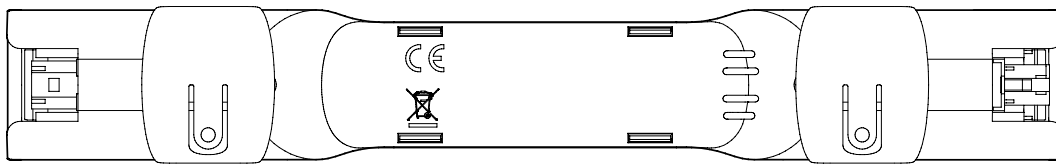
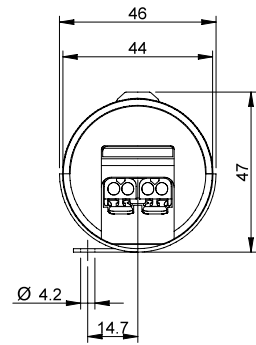
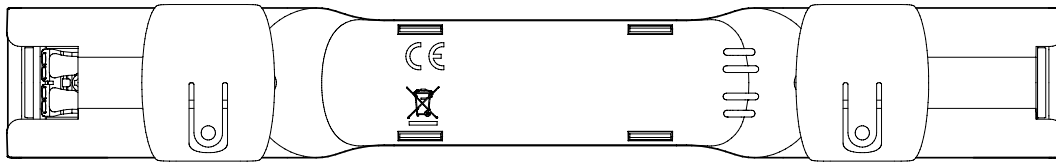
Types 7L.4x.0.xxx.1100 / 1200



G

### Outline drawings

Types 7L.4x.0.xxx.2100 / 2200



G

